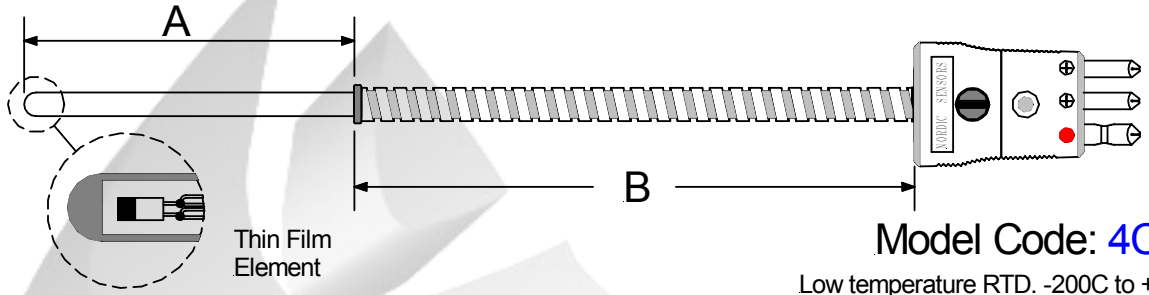


# Plastic Industry RTD's

## Metric Size Tube & Wire General Purpose RTD



Model: **4C**  1.  2.  -  3.  4.  5.  6.  7.  8.

**1. Outside Diameter**

A	3mm
B	4mm
C	5mm
D	6mm

**2. "A" Dimension**

**"A" = 150 "**

Insertion Length In mm

**3. RTD Element Type**

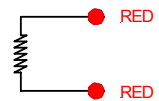
Ohms	Class A	Class B
1 x Pt100	1	2
2 x Pt100	3	4
1 x Pt1000	5	6
2 x Pt1000	7	8

Temperature Coefficient: 0.00385  
Platinum element  
IEC 751

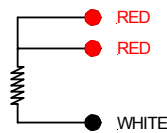
**4. RTD Wire Connection**

A	2 Wire Configuration
B	3 Wire Configuration
C	4 Wire Configuration

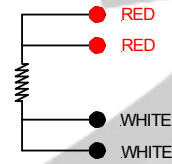
**2 Wire Configuration**



**3 Wire Configuration**



**4 Wire Configuration**



**5. Wire Description**

S	24 Gage Stranded Stainless Steel Braid
X	Flexible Armor Cable
F	24 Gage Stranded Fiberglass Cable
T	24 Gage Stranded Teflon Cable

**6. "B" Dimension**

**"B" = 01 "**

Leads Wire Length In Meters

**7. Termination Type**

A	90mm Split Leads & Bare Ends.
B	90mm Slip Leads & Spade Lugs
C	Standard Male Plug (2 & 3 Wire config. only)
D	Standard Female Jack (2 & 3 Wire config. only)
E	Mini Male Plug (2 & 3 Wire config. only)
F	Mini Female Jack (2 & 3 Wire config. only)

**8. Accessories**

1	None
2	Bx Connector
3	Cable Clamp

Nordic Sensors Ind. Inc. Tel: 1-888-667-3421 & Fax: 1-888-867-9986.