

# Mineral Insulated RTD

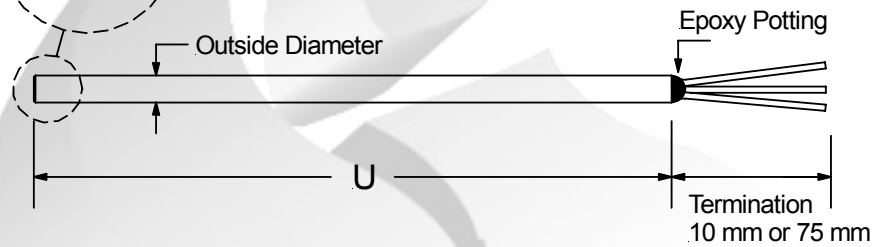
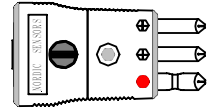
## Metric Straight RTD Elements

Operating Temperature:  
-200 C to +500 C Max.

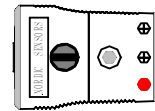
Ceramic RTD Element

Model Code: **5M**

Optional Male Connector



Optional Female Connector



Compression fittings are sold separately. See accessory section.



A	Outside Diameter
1	2 mm
2	3 mm
3	4 mm
4	6 mm

C	"U" Dimension
	Specify "U" Length In mm <u>100</u>

Example "U" is 100 mm = 100

B	Sheath Material
A	304 Stainless
B	316 Stainless

D	RTD Element Type	
Ohms	Class A	Class B
1 x Pt100	1	2
2 x Pt100	3	4
1 x Pt1000	5	6
2 x Pt1000	7	8

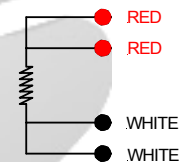
Temperature Coefficient: 0.00385  
Platinum Element  
IEC 751

E	RTD Wire Connection
A	2 Wire Configuration
B	3 Wire Configuration
C	4 Wire Configuration

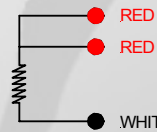
2 Wire Configuration



4 Wire Configuration



3 Wire Configuration



F	Termination Type
1	10 mm Split Bare Ends.
2	75 mm Split & Color Coded Leads.
3	Standard Male Plug
4	Standard Female Jack
5	Mini Male Plug
6	Mini Female Jack

Connectors can only be installed  
on 2 & 3 wire configuration RTDs.

Nordic Sensors Ind. Inc. Tel: 1-888-667-3421 & Fax: 1-888-867-9986.